



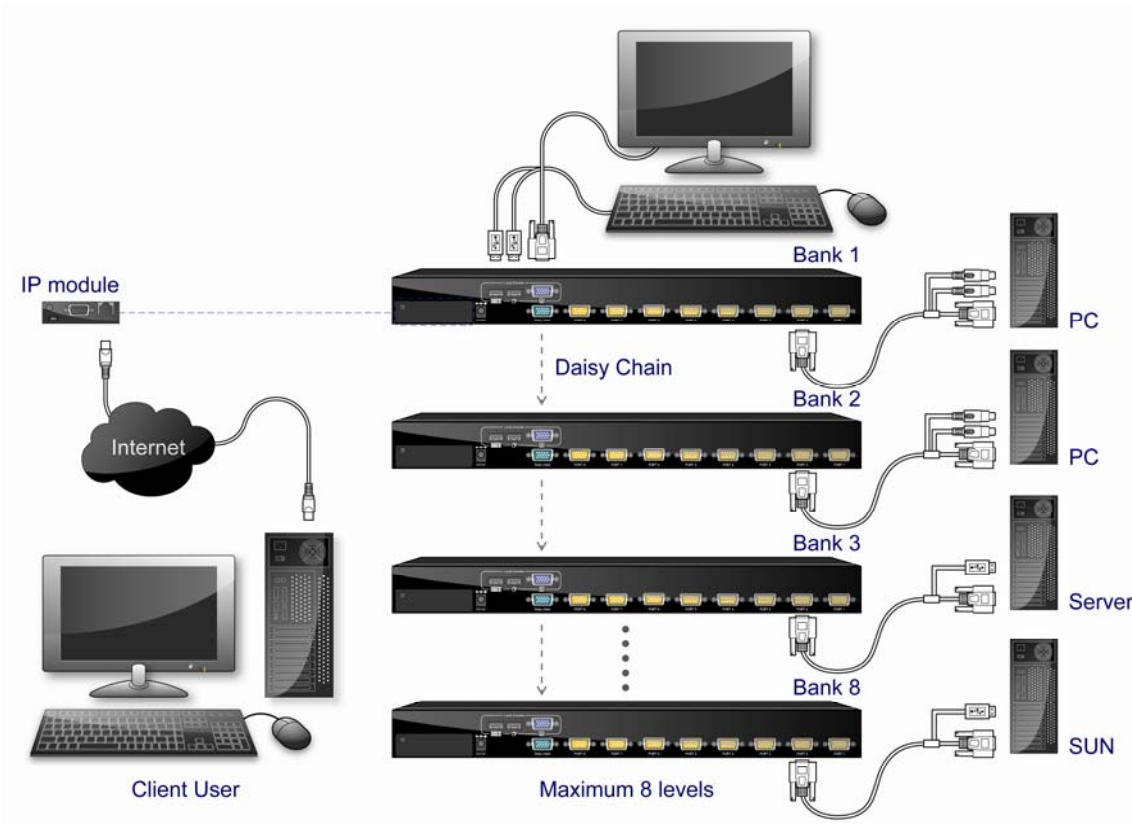
IP Module

Quick Setting Guide

03 9681 7664
+61 3 9681 7664
www.rackworld.com.au

Rev 1.0

1. Application Diagram



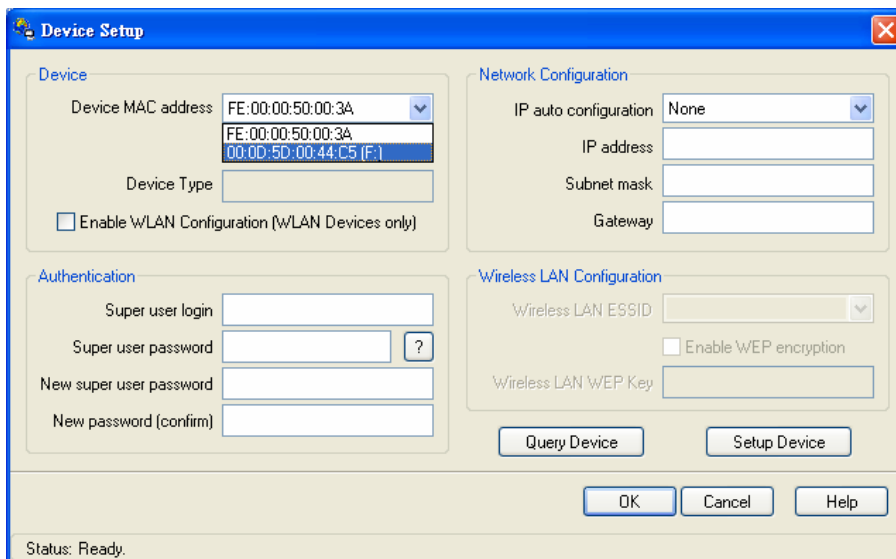
2. Remote Console installation

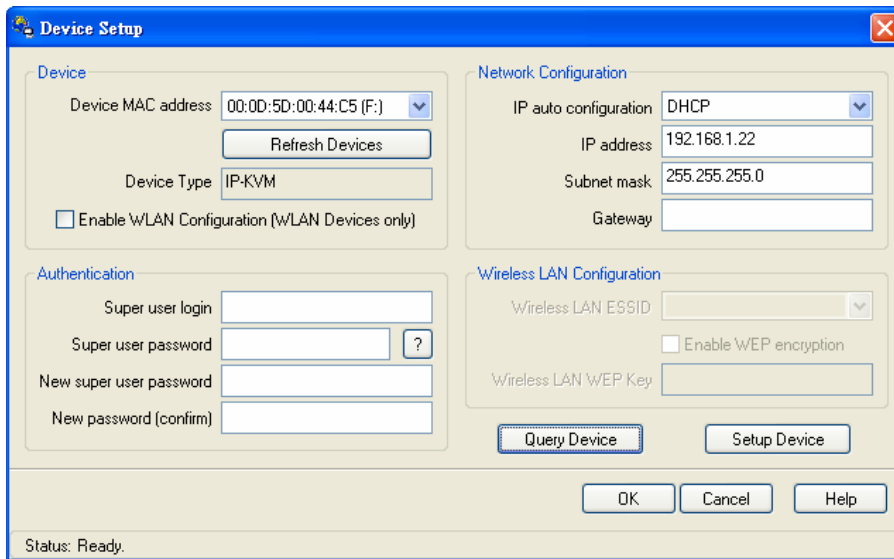
The preconfigured IP configuration of IP module from factory is as the following:

IP:	192.168.1.220
Subnet Mask:	255.255.255.0
Default Gateway:	192.168.1.1

You can change these setting by PSetup.exe program, connected to the IP Module to be configured through Ethernet cable. PSetup.exe program can be found on the CD-ROM come with the product.

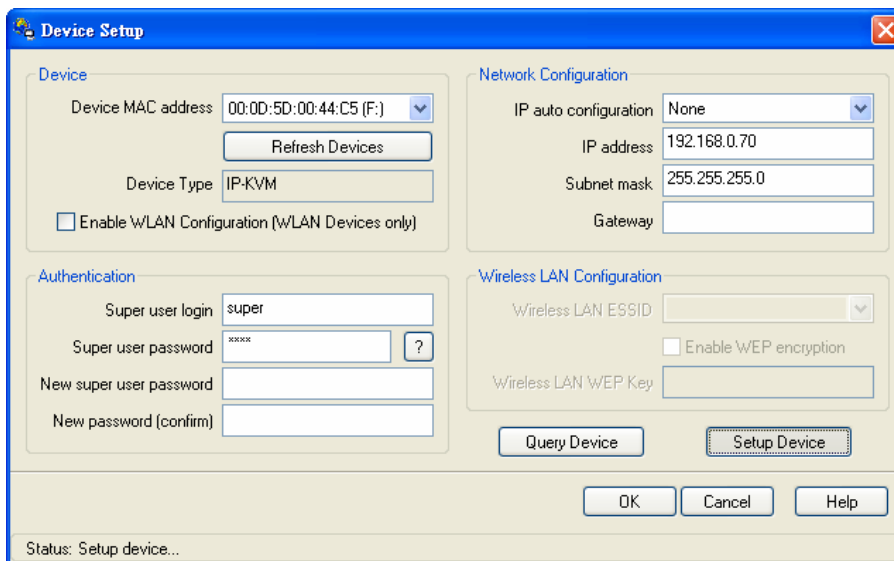
1. Connect IP-module to Computer via Ethernet cable
2. Using PSetup.exe to look for IP-KVM switch.
 - a. Select device showing MAC address which labeled on bottom of IP-KVM switch.
 - b. Query Device





3. Setup fixed IP

- a. Setup “IP auto configuration” or setup IP address and Subnet mask
- b. Enter Supervisor login and password for Authentication (default user name and password: super/pass)
- c. Setup Device. If super login was authenticated, it’ll show “Successfully configured device”. Otherwise it’ll show “Permission Denied”.



4. Unplug Ethernet cable to IP module and re-plug cables properly.
5. Connect CAT5 cable to IP-based module and the other end of cable to LAN (Local Area Network) switch.



NOTE: Please read the “IP KVM Guide” for more information on IP-MODULE.

IP Module

